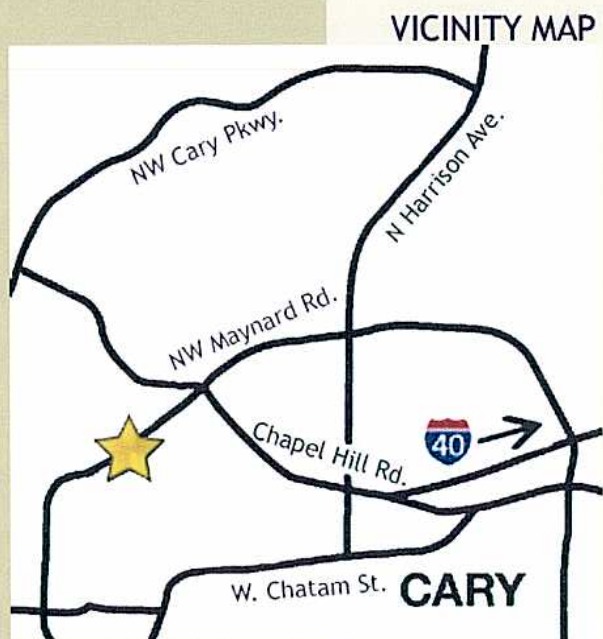
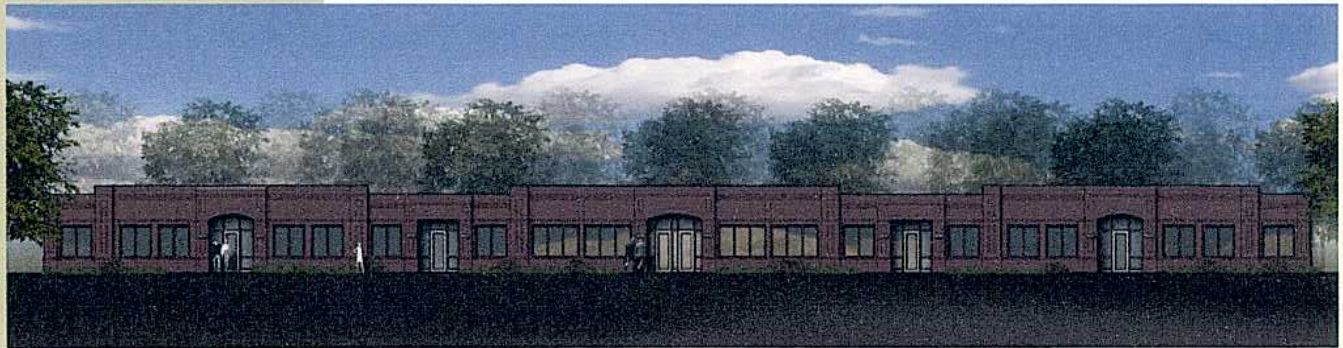


MAYNARD OFFICE BUILDING

1720-1750 MAYNARD ROAD, CARY, NORTH CAROLINA



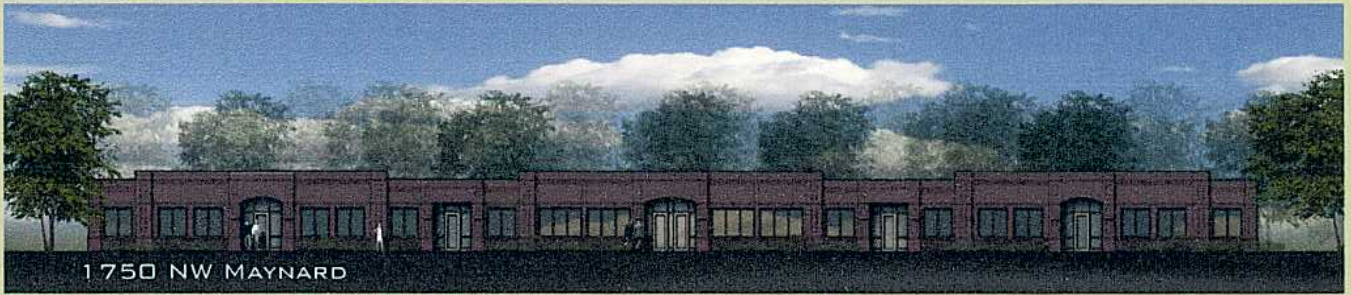
- FOR LEASE
- ALL BRICK GARDEN LEVEL SUITES
- CUSTOM INTERIOR FINISHES AVAILABLE
- SIGNALIZED INTERSECTION
- EASY ACCESS, CENTRALLY LOCATED
- MEDICAL / PROFESSIONAL / FLEX SPACE
- SUITES AVAILABLE FROM 1500 TO 11800 SF

FOR MORE
INFORMATION
CONTACT
RUSSELL GAY

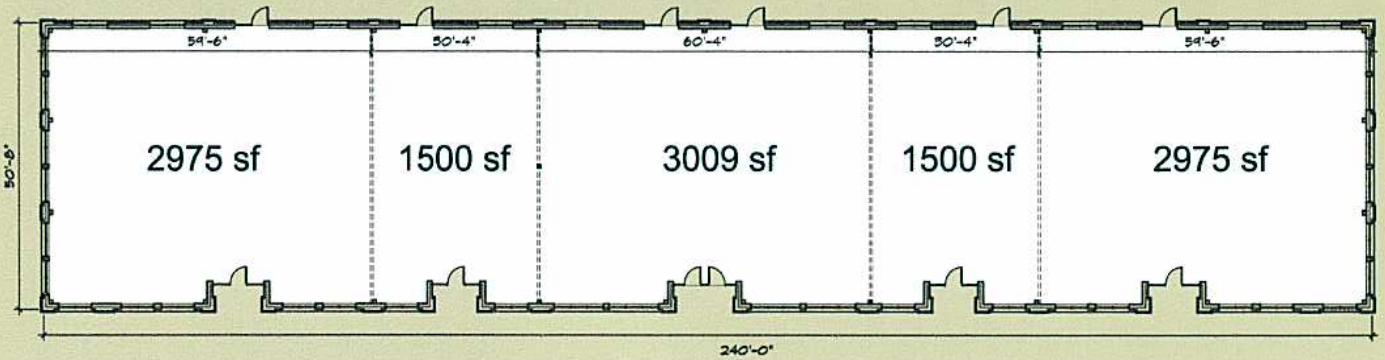
919.961.8725

RUSSELL GAY AND ASSOCIATES
COMMERCIAL REAL ESTATE

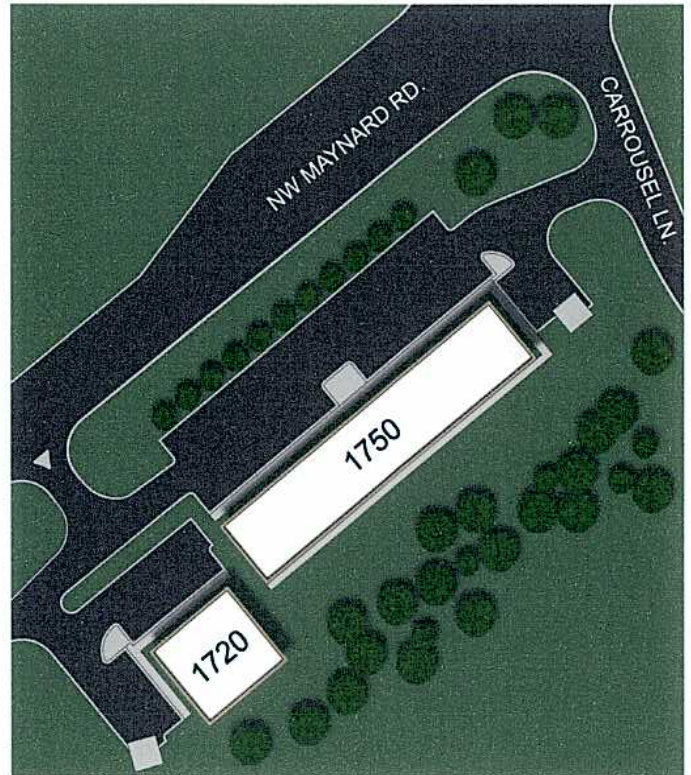
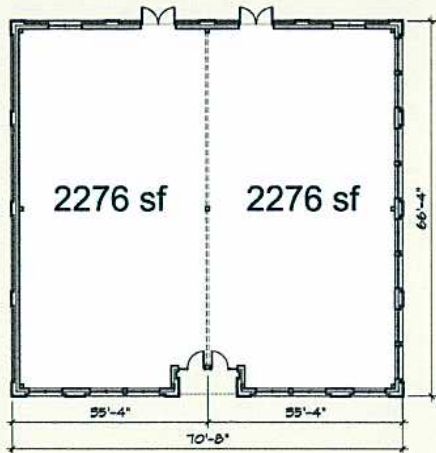
www.russellgay.com



1750 NW MAYNARD



1720 NW MAYNARD



MAYNARD OFFICE BUILDING
 1720-1750 MAYNARD ROAD, CARY, NORTH CAROLINA


RUSSELL GAY AND ASSOCIATES
 COMMERCIAL REAL ESTATE
www.russellgay.com

FOR MORE INFORMATION CONTACT
 RUSSELL GAY
 919.961.8725